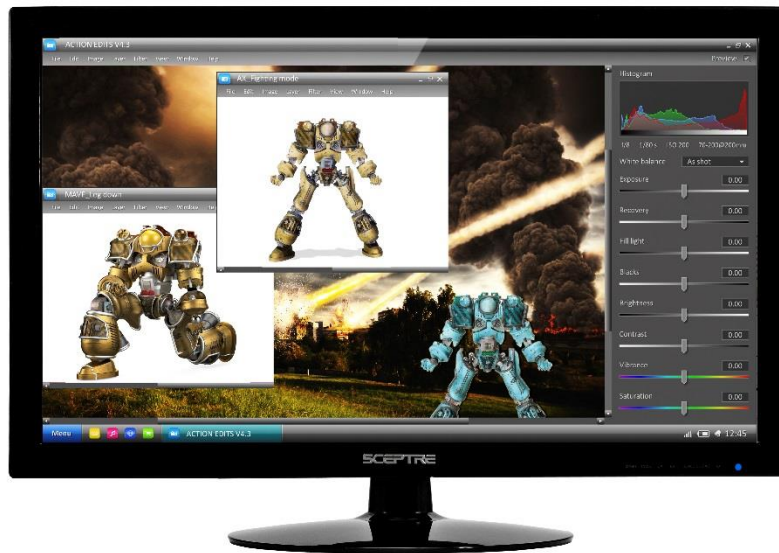


Sceptre Announces Availability of 27-inch LED 1080P Monitor



City of Industry, CA – December 1, 2014 – [Sceptre](#), superior manufacturers of world class LED and LCD HDTVs and PC monitors, announces the availability of their E275W-1920 Full HD 1080P Monitor.

The 27-inch LED monitor features 1080P resolution and delivers stunning color and picture detail. A 5 millisecond response time allows all activity on your LED screen to seamlessly transition almost instantly. The monitor also features both HDMI, DVI and VGA inputs to connect all video and gaming devices.

“Whether you are a gamer or a movie buff, the Sceptre E275W-1920 monitor is the way to go,” said Cathy Chou, Vice President of Operations of Sceptre. “With such a high resolution, this monitor offers a lifelike picture, ideal for movies, video games or every day usage.”

Sceptre monitors are fully compatible with Microsoft Windows 8, the most recent operating system available on PCs. With built-in speakers, the monitor delivers high-quality audio for streaming videos through the web and listening to your favorite tunes. Additionally, the E275W-1920 Monitor comes with the ability to tilt 15 degrees backward and 5 degrees forward, providing multiple options for finding the optimum angle to view the screen with ease.

The E275W-1920 Monitor is now available at Amazon, Best Buy, Costco, K-Mart, Newegg, QVC, Sears, Target, TigerDirect and Walmart. For more information about the monitor or the entire line of Sceptre products, please visit www.sceptre.com or contact Pedro Chen at pedrochen@maxborgesagency.com.

ADDITIONAL PRODUCT SPECIFICATIONS

Model	E275W-1920 Monitor
Active Screen Size	27"
Aspect Ratio	16:9
Brightness	250 cd/m ²
Contrast Ratio	1000:1
Resolution	1920 X 1080
Response Time	5 ms G-to-G
Signal Compatibility	1080/60p, 1080/60i, 720p, 480p, 480i
Built-in Speakers	2 x 2W 8 Ohm
Ports	1 HDMI
	1 DVI
	1 VGA
	1 Headphone (PC Audio In)
Additional Characteristics	Auto Dynamic Contrast Enhancement
	Base Detachable
	Backward Tilt: 15 degree / Forward: 5 degree
	Energy Star V6.0
	VESA Wall Mount Pattern (100mm x 100mm)
Weight	12.61 lbs net weight (with stand)

###

About Sceptre

Headquartered in City of Industry, California, the hub of the computer industry, Sceptre is an internationally certified manufacturer of world class LCD and LED flat panel monitors. Established in 1984, Sceptre is fully committed to maintaining its status as a leader in the industry by providing the latest advanced technology in LCD and LED displays at affordable prices with tailored service programs. For more information, please visit www.sceptre.com.

Media Contact:

Pedro Chen
Max Borges Agency
Account Supervisor
(305) 374-4404 x139
pedrochen@maxborgesagency.com