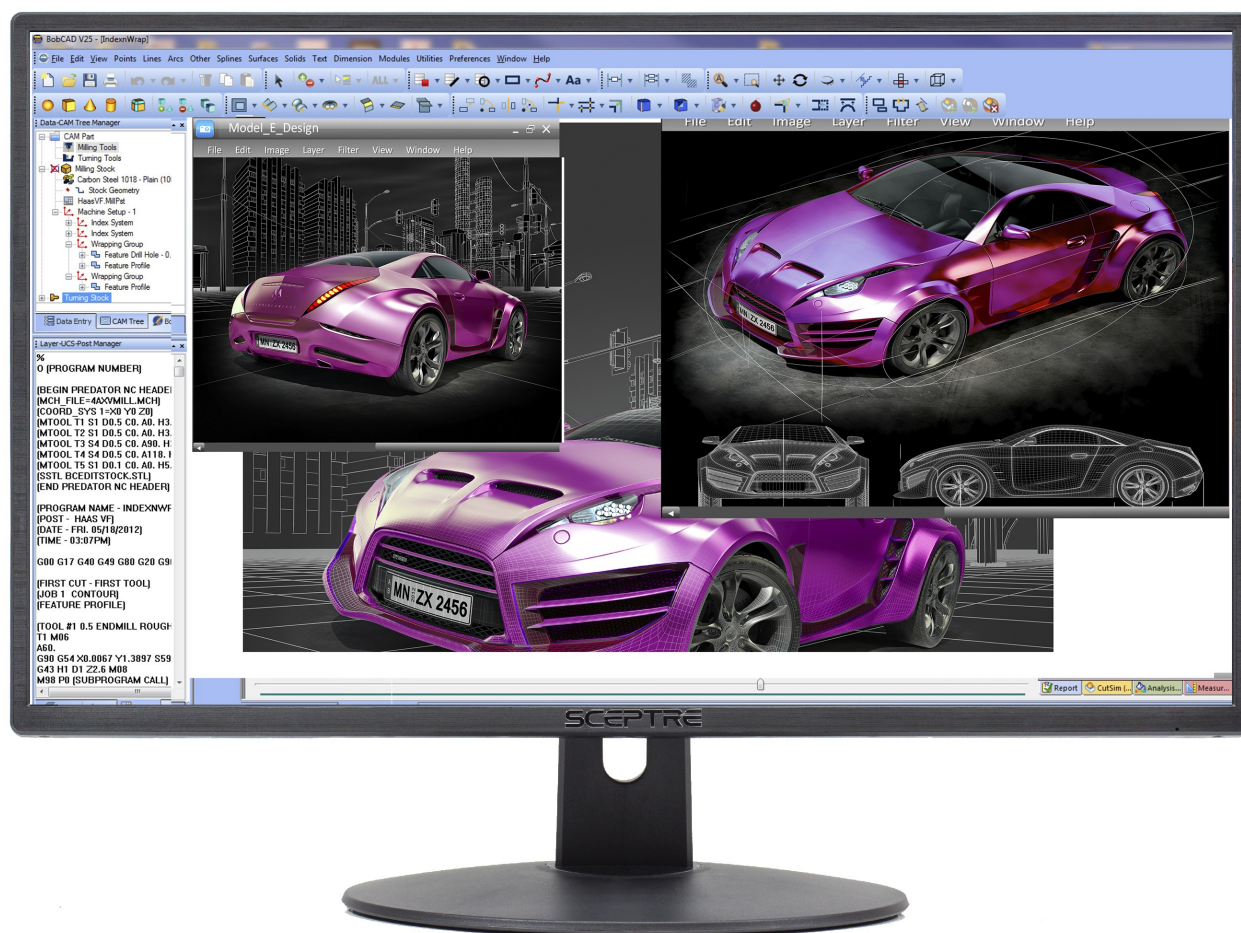


E225W-19203R 22" LED Monitor



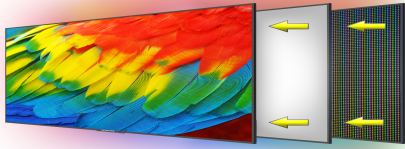
Specification

Display	
Active Screen Size	21.5" Diagonal Viewable
Panel Type	TN (Twisted Nematic)
Native Resolution	1920 x 1080
Refresh Rate	Up to 75Hz Refresh Rate
Aspect Ratio	16:9
Response Time	3ms (G-to-G)
Pixel Pitch	0.24825mm (H) × 0.24825mm (V)
Dynamic Contrast Ratio	1,000,000:1
Color Gamut	sRGB:95% DCI-P3:76%
Color Depth	16.7M (6-bit Hi-FRC)
Contrast Ratio	3,000 : 1
Brightness (Typ.)	250 cd/m ²
Viewing Angle	Vertical: 160° / Horizontal: 170°
Backlight Life	50,000+ Hours
Anti-Flicker	Yes
Surface Treatment	Antiglare, Hard coating (3H)

Features	
On Screen Display Control (OSD)	Quick Start, Picture, Color, System
Color Temperature	Warm, Normal (Default), Cool, User
Picture Presets	Standard, User, Movie, Eco, FPS, RTS
Game Presets	FPS and RTS
OSD Supported Languages	English (Default), French, Spanish , Chinese
Blue Light Shift	Available
Auto Dynamic Contrast Mode	Available
Gamma	Adjustable
Audio Features	
Speakers	2 x 2W/4Ω
Inputs & Outputs	
Supported Digital Signals	30 – 80 kHz (Horizontal) / 60 – 75 kHz (Vertical)
HDMI (# of Ports & Version)	2 x HDMI
Supported HDMI Signals	Up to 1920 x 1080 @ 75Hz; 1080/60p, 1080/60i, 720p, 480p, 480i
3.5mm Auxiliary Input Jack	Yes
VGA (# of Ports)	1 x VGA
3.5mm Headphone Jack (Output)	Yes
Supported VGA Signals	Up to 1920 x 1080 @ 75Hz; 1080/60p, 1080/60i, 720p, 480p, 480i
Mechanical Features	
Tilt	Backward:15° Forward:5°
Bezel Width	Top, Left and Right: 0.33" ; Bottom: 0.47"
Neck / Stand Detachable	Yes
Slim Design	Ultra Slim
VESA Mount Pattern (mm)	75mm x 75mm
VESA Mount Screw Size (mm)	M4 x 12mm
Neck Screw Size & Quantity (mm)	M4 x 10mm (2pcs)
Dimensions	
With Stand (inches, W x H x D)	19.92" x 15.09" x 7.02"
Without Stand (Inches, W x H x D)	19.92" x 11.92" x 1.45"
Carton Box Dimension (inches, W x H x D)	21.77" x 14.25" x 4.33"
Weight	
Net Weight with Stand (lbs)	5.80 lbs
Net Weight without Stand (lbs)	5.14 lbs.
Gross Weight (lbs)	8.58 lbs
Power	
Power Range (V, A, Hz)	AC-DC Adapter: Input: 100 – 240 VAC, 50/60 Hz, 1.0A (Max.) Output: 12V DC, 2.0A
Power Consumption (Typical)	21.3W
Maximum	30W
Standby	< 0.5W
Regulations / Certifications	

Regulations	FCC, cTUVus, ISTA 6A, RoHS
Security	
Type	Security Lock
Warranty	
Limited Parts and Labor	One Year
What's in the Box?	
Power Cable	AC Power Adapter x 1 (12V / 2.5A)
Display Cable	VGA Cable x 1
Accessories	Monitor Display x 1, Stand x 1, Neck Screw x 2, Screwdriver x 1 , User Manual x 1

Key Features



LED

With sharper contrasts of light and darks, LED display delivers a vast array of rich colors, ensuring that moving images have never been so pleasing to the eyes.



75Hz Refresh Rate

With 75Hz refresh rate, images change faster and smoother than the standard, reducing screen tearing



Fast Response Time

Fast response times reduce ghosting & blurring while transitioning pixels, always keeping the enemy & terrain precisely in focus during chaotic moments.



AMD FreeSync

With FreeSync, gamers now enjoy smooth video and seamless on the spot movement through their fast paced games. FreeSync is an AMD technology that nearly eliminates tearing and stuttering due to differences between a graphics card's frame rate and a monitor's refresh rate.



HDMI and VGA Ports

One HDMI and one VGA port each accelerate refresh rate up to 75Hz, providing the visual edge you need to defeat the competition during all of your gaming exploits.



Built-in Speakers

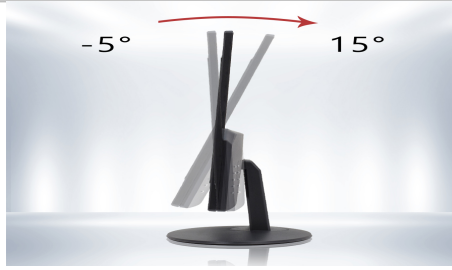
With built-in speakers, the monitor delivers office level audio for conference calls and internet workshops. Similarly, enjoy engaging audio while listening to your favorite tunes.

Key Features



Security Lock

The monitor has a security slot, allowing you to securely fasten your monitor in place, effectively preventing theft. *Security Lock not included.



Tiltable Display

A display that tilts 15° backward and 5° forward allows you to find a sweet spot that bridges clarity and comfort.



VESA Wall Mountable

The VESA wall mount pattern gives you the freedom to select the optimum viewing position for your monitor, eliminate cable clutter, and save valuable space for your gaming and work station.



Customer Service

Our customer service representatives are, and have always been, based in the USA, guaranteeing that our customers' needs are met as efficiently as possible.



30+ Years of Experience

Founded in City of Industry, CA over 30 years ago, Sceptre Inc. made a promise to create & deliver superior products for remarkably affordable prices, a rare tradition that continues today.