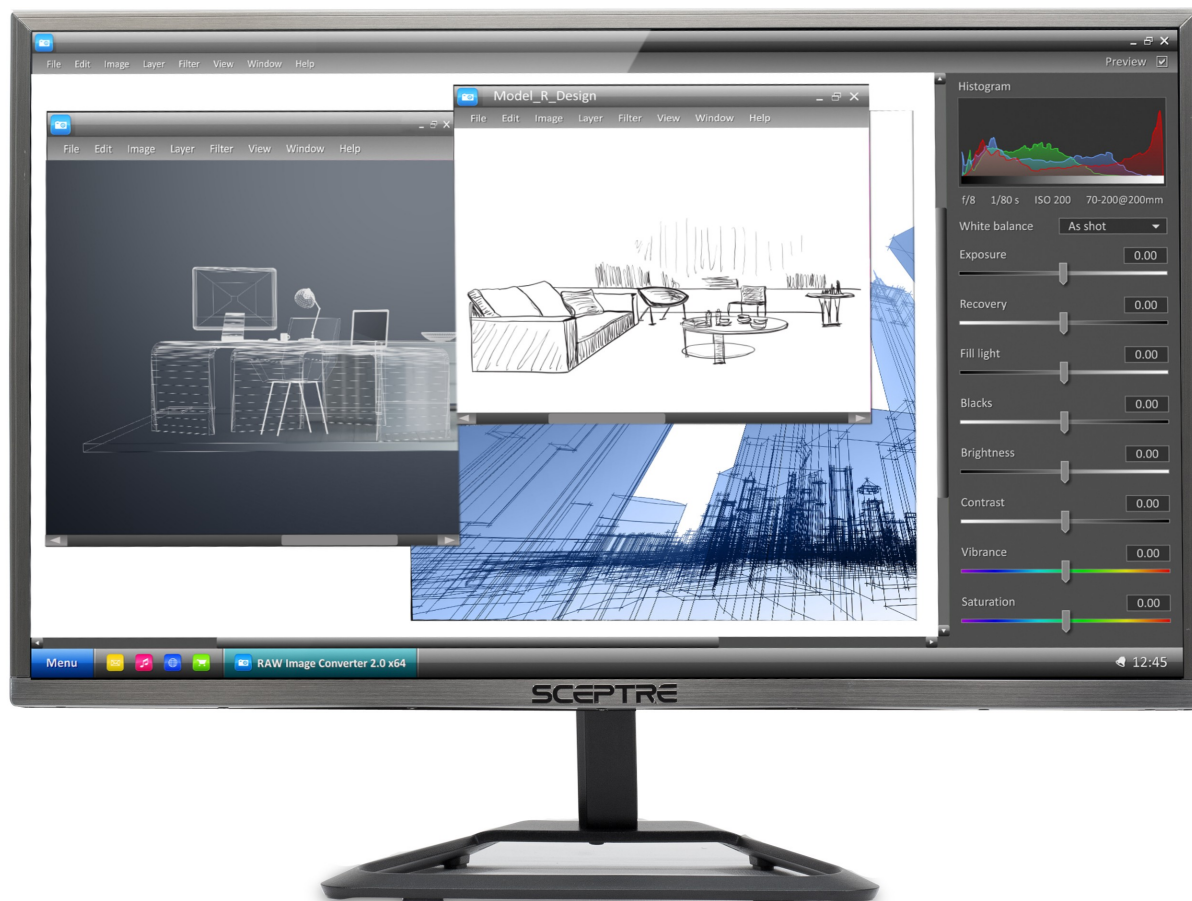


## E225W-1920RR 22" LED Monitor



## Specification

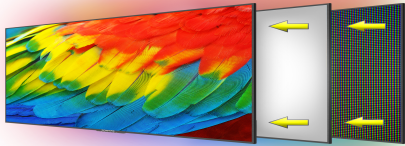
### Display

Active Screen Size	21.5" Diagonal Viewable
Panel Type	VA (Vertical Alignment)
Native Resolution	1920 x 1080
Refresh Rate	Up to 75Hz Refresh Rate
Aspect Ratio	16:9
Response Time	5 ms (G-to-G)
Pixel Pitch	0.24795mm (H) x 0.24795mm (V)
Dynamic Contrast Ratio	1,000,000 : 1
Color Gamut	sRGB:97% DCI-P3:80%
Color Depth	16.7M (6-bit Hi-FRC)
Contrast Ratio	3,000:1
Brightness (Typ.)	230 cd/m <sup>2</sup>
Viewing Angle	Vertical: 178°deg; / Horizontal: 178°deg;
Backlight Life	50,000+ Hours
Anti-Flicker	Yes
Surface Treatment	Antiglare, Hard coating (3H)

Features	
On Screen Display Control (OSD)	Quick Start, Picture, Color, System
Color Temperature	Warm, Normal (Default), Cool, User
Picture Presets	Standard, User, Movie, Eco, FPS, RTS
Game Presets	FPS and RTS
OSD Supported Languages	English (Default), French, Spanish , Chinese
Blue Light Shift	Available
Auto Dynamic Contrast Mode	Available
Gamma	Adjustable
Inputs & Outputs	
Supported Digital Signals	30 – 80 kHz (Horizontal) / 60 – 75 kHz (Vertical)
HDMI (# of Ports & Version)	1 x HDMI
Supported HDMI Signals	Up to 1920 x 1080 @ 75Hz; 1080/60p, 1080/60i, 720p, 480p, 480i
3.5mm Auxiliary Input Jack	Yes
VGA (# of Ports)	1 x VGA
3.5mm Headphone Jack (Output)	Yes
Supported VGA Signals	Up to 1920 x 1080 @ 75Hz; 1080/60p, 1080/60i, 720p, 480p, 480i
Mechanical Features	
Chassis Colors	Silver
Tilt	Backward:15° Forward: 5°
Neck / Stand Detachable	Yes
Slim Design	Ultra Slim
VESA Mount Pattern (mm)	100mm x 100mm
VESA Mount Screw Size (mm)	M4 x 10mm
Neck Screw Size & Quantity (mm)	M3 x 10mm (2pcs)
Stand Screw Size & Quantity (mm)	M4 x 10mm (2pcs)
Dimensions	
With Stand (inches, W x H x D)	19.56" x 14.44" x 6.57"
Without Stand (Inches, W x H x D)	19.56" x 11.49" x 1.22"
Carton Box Dimension (inches, W x H x D)	22.04" x 4.21" x 14.56"
Weight	
Net Weight with Stand (lbs)	4.84 lb
Net Weight without Stand (lbs)	4.40 lb
Gross Weight (lbs)	9.50 lb
Power	
Power Range (V, A, Hz)	AC-DC Adapter: Input: 100 – 240 VAC, 50/60 Hz, 1.0A (Max.) Output: 12V DC, 2.0A
Power Consumption (Typical)	< 15W
Standby	< 0.5W
Regulations / Certifications	
Regulations	FCC, cTUVus, ISTA 3A, WHQL,RoHS
Warranty	

Limited Parts and Labor	One Year
What's in the Box?	
Power Cable	AC Adapter Cable x 1
Accessories	Monitor Display x 1, Stand x 1, Stand Screws x 1, Screwdriver x 1, User Manual x 1

## Key Features



### LED

With sharper contrasts of light and darks, LED display delivers a vast array of rich colors, ensuring that moving images have never been so pleasing to the eyes.



### 75Hz Refresh Rate

With 75Hz refresh rate, images change faster and smoother than the standard, reducing screen tearing



### Fast Response Time

Fast response times reduce ghosting & blurring while transitioning pixels, always keeping the enemy & terrain precisely in focus during chaotic moments.



### HDMI and VGA Ports

One HDMI and one VGA port each accelerate refresh rate up to 75Hz, providing the visual edge you need to defeat the competition during all of your gaming exploits.



### Blue Light Shift

Blue Light Shift reduces blue light, allowing you to comfortably work, watch, or play applications without straining your eyes.



### Anti-Flicker

Provides a crisper picture by preventing the backlight from flickering periodically.



## Key Features



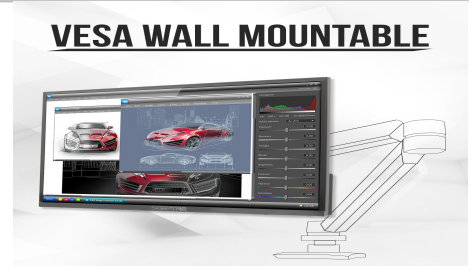
### FPS-RTS Game Modes

FPS and RTS are Sceptre's custom set display settings built for an enhanced gaming experience. FPS (First Person Shooter), RTS (Real-Time Strategy).



### Tiltable Display

A display that tilts 15° backward and 5° forward allows you to find a sweet spot that bridges clarity and comfort.



### VESA Wall Mountable

The VESA wall mount pattern gives you the freedom to select the optimum viewing position for your monitor, eliminate cable clutter, and save valuable space for your gaming and work station.



### Customer Service

Our customer service representatives are, and have always been, based in the USA, guaranteeing that our customers' needs are met as efficiently as possible.



### 30+ Years of Experience

Founded in City of Industry, CA over 30 years ago, Sceptre Inc. made a promise to create & deliver superior products for remarkably affordable prices, a rare tradition that continues today.